

Thank you for purchasing this Welcare Digital Thermometer.

Please keep this instruction manual in a safe place where it is readily available.

Note: The illustrations in this manual may differ slightly from the product itself.

Read Instructions Carefully Before Use

Important Safety Information

Read this section thoroughly before using the product. Please ensure you observe the safety instructions to avoid accidents, injury and damage.

Intended Purpose

- This product is intended for the measurement of human body temperature only. It is designed for private use.
- The use of temperature readings for self-diagnosis is dangerous. Consult with a doctor for the interpretation of results. Self-diagnosis may lead to the worsening of medical conditions.
- This product is not intended for use by persons (including children) with limited physical, sensory or mental abilities or lacking experience and/or knowledge, unless they are supervised by a person responsible for their safety or have received and understand the instructions/ safety warnings for use of the product from this person in advance.

Safety Warnings

- WARNING - KEEP BUTTON BATTERIES OUT OF REACH OF CHILDREN**
- Button batteries are hazardous (whether the battery is new or used).
- Swallowing or insertion of a button battery into any part of the body can cause severe or fatal injuries in 2 hours or less.
- If you suspect your child/a person has swallowed or inserted a button battery inside their body, medical attention should be sought immediately. You can also call the Poisons Information Centre on 13 11 26 (Australia) or 0800 764 766 (New Zealand) for 24/7 fast, expert advice.
- Dispose of products containing button batteries safely and according to current local regulations.
- Tell others about the risk associated with button batteries and how to keep their children safe.
- Keep the packaging, product and its components out of reach of children.



A high or prolonged fever requires medical attention, especially for young children. Please contact a doctor.

- This product is for oral, rectal or underarm use only. **DO NOT** attempt to take temperatures at other sites, such as in the ear, as it may result in false readings and may lead to injury.
- Oral use is only for ages 2+.
- Avoid using the product during or within 30 minutes after strenuous exercise; a shower, bath or sauna; using a cold compress; heavy alcohol consumption; smoking and food or drink intake.
- DO NOT** attempt measurements when the product is wet as inaccurate readings may result.
- DO NOT** bite on the product.

- Avoid excessively bending the thermometric tip. **DO NOT** bend flexi tip more than 45 degrees.
- DO NOT** force the product into the rectum. Stop insertion and abort the measurement when pain is present.
- DO NOT** attempt rectal measurements on persons with rectal disorders.
- DO NOT** drop, step or place heavy objects on the product, as it is a precision instrument.
- DO NOT** store the product in the storage case when it is damp. Wipe it off with a clean dry soft cloth first.
- DO NOT** attempt to open or disassemble the product.
- DO NOT** place product near extreme heat as it may explode.
- This product is equipped with a Lithium Manganese Button Battery. Failure to follow these instructions could cause the battery to leak, become hot, explode or ignite and cause injury and/or damage.
- DO NOT** expose to temperatures over 55 °C.
- DO NOT** use with other electrical or medical equipment simultaneously.
- DO NOT** use within 30cm of a mobile device or a device that emits electromagnetic fields as this may cause interference with the functioning of the products.
- DO NOT** use or store the product in the following conditions:
 - Near sources of heat, in hot water, direct sunlight or high temperature
 - Moist or humid environments
 - Dusty locations
 - Near fire, flammable gas, chemicals or oxygen rich environments
 - Locations easily subject to vibrations or shock or in a pressurized container
 - In high frequency or strong magnetic field areas - e.g. surgical equipment, MRI, CT, microwave oven

Package Contents

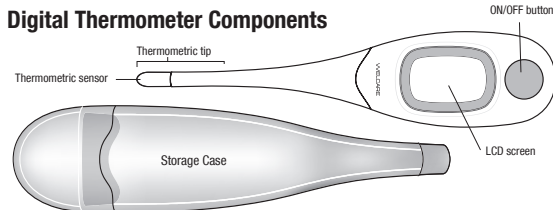
- 1 x Thermometer
- 1 x Battery (non-accessible)
- 1 x Storage Case
- 1 x Instruction Manual & Warranty Information

Battery

- When the low battery symbol is shown on the bottom right of the screen the battery life is depleted.
- Dispose of as per instructions.

Non replaceable battery. Battery life is approximately 3 years.

Digital Thermometer Components



Before using the Digital Thermometer

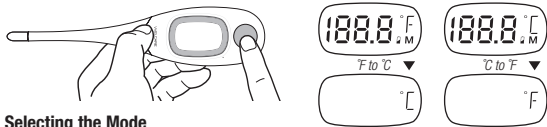
- Check the product is intact. **DO NOT** use if broken.
- Read the instruction manual thoroughly before taking the measurement.
- Allow product to rest for at least 30 minutes at room temperature (5°C – 32°C).
- The user must remain in a stable environment for at least 5 minutes prior to taking a reading.
- Test the user's temperature when they are well so there is a comparison when they are unwell.
- Temperature readings are affected by many factors including physical exertion, the drinking of hot or cold beverages before measurement, as well as measuring technique.
- Avoid using the product during or within 30 minutes after exercise; a shower, bath or sauna; using a cold compress; heavy alcohol consumption; smoking and food or drink intake.
- Underarms must be clean and free of sweat, deodorant and scars, etc. for underarm use.
- Always make sure the thermometric sensor is clean before each use.
- When measuring the temperature of an infant, note that infant body temperature is generally higher than adult body temperature and easily affected by external factors. For example, body temperature tends to increase after nursing or crying. Therefore, it is recommended to take measurements when the infant is calm.

Using the Digital Thermometer

The use of temperature readings for self-diagnosis is dangerous. Consult with a doctor for the interpretation of results. Self-diagnosis may lead to the worsening of medical conditions.

Switching the measuring unit between °C and °F

- While the product is **Off**, press and hold the **On/Off** button for 3 seconds to turn on. The screen will show the last measured value. Press and hold the **On/Off** button until °C or °F appears. Quickly press the **On/Off** button to alternate between °C and °F. The product will automatically save your choice and run a self-check before going into measurement mode.



Selecting the Mode

- While the product is **Off**, press and hold the **On/Off** button for 3 seconds. Press the button again quickly to cycle through the four mode options (see below). When the desired mode displays on screen, wait approx. 2 seconds for auto shut-off to select and save the mode.



Taking a Temperature Measurement

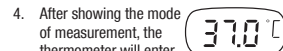
- Note:** The ambient temperature for use must be between 5-32°C. This product is a maximum thermometer, i.e. the displayed temperature can increase slightly if measurement continues after the beep. Holding the product too long may cause a higher ambient temperature reading of the probe. This could make the body temperature measurement lower than usual.

Before using, please disinfect the thermometric tip (refer to Cleaning section).

- While the thermometer is off, press and hold the **On/Off** button for 3 seconds.



- Press the **On/Off** button. The product will run a self-check test, during which all the digital segments appear on the screen.



- The memory will show the last reading on the screen for 2 seconds.



- The three dashes (---) will flash sequentially throughout the testing process. As soon as the temperature value is reached (approx. 5 seconds) flashing stops and an alarm will beep for approximately 10 seconds. The measured reading will appear on the LCD simultaneously.
- Once the beeping has stopped the measurement is completed. Remove the product from the measurement site.
- The highest temperature measured appears on the screen.
- Turn the product off by pressing the **ON/OFF** button.
- Although the product will turn off automatically after 10 minutes, to conserve power it is recommended to turn the product off manually after each reading.
- The reading will automatically be stored in the memory.
- The measurement continues even after the beeping has stopped. In order to achieve better body temperature measurement results, it is recommended to keep the probe in mouth and rectum for an additional 2 minutes, or in armpit about for an additional 5 minutes after the beeping sound.

Note: Result times may vary due to the individual and method used.

Memory Function

- The last measured temperature will display on the screen for approximately 2 seconds after the self-check when the product is turned on.

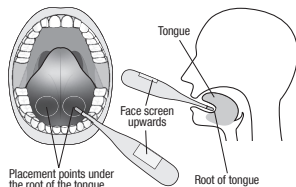
Methods of Measuring Temperature

- Note:** Measurement accuracy cannot be assured when the method used to measure the temperature is incorrect. If multiple measurements are taken over a period of time, it is important to use the same method of measurement each time so the results are comparable, i.e. do not interchange between oral, rectal or underarm measurements. If taking multiple measurements within a short period of time, allow the thermometer to return to room temperature prior to taking each measurement.

Oral Mode (ages 2+ only)

Note: **DO NOT** eat or drink anything before the measurement, or bite on the product.

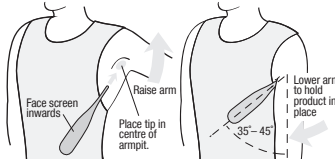
- To ensure that reading is as accurate as possible, place the thermometric sensor to the left or right of the underneath/root of the tongue. Ensure the screen faces upwards.
- The thermometric sensor must have constant contact with the tissue during the reading and be placed under the tongue in one of the two heat pockets at the back. Press the tongue down to hold the product in place.
- Keep the mouth closed during the reading and breathe evenly through the nose, while holding onto the product to keep it from moving during measurement.
- There are different heat zones in the mouth. Generally, the oral temperature is 0.3°C to 0.8°C lower than the rectal temperature.



Underarm Mode (axillary)

Note: Wipe off any underarm perspiration and deodorant prior to taking a reading under the arm.

- Place the thermometric sensor in the centre of the armpit. It must be touching the skin, remove clothing if necessary.
- Turn the screen so that it faces inwards.
- Hold the product in place by slightly applying pressure inwards towards the body.
- The product should be placed at an angle of 35-45 degrees in relation to the arm.
- When using with infants or young children, it is advised to gently hold their arm in place while taking the measurement.



Placing the product in the armpit provides a measurement of surface temperature that can fluctuate by around 0.5°C to 1.5°C from rectal temperature readings in adults.

Note: An exact reading cannot be obtained if, the armpits have been allowed to cool. If this is the case, we recommend extending the measuring time by around 5 minutes in order to obtain the most precise possible reading that corresponds as closely as possible to the core body temperature.

Rectal Mode

Note: This is the most accurate method from a medical point of view, because it comes closest to the core body temperature. It is commonly used for young children when it is difficult to take an oral or underarm temperature. **DO NOT** attempt rectal measurements on persons with rectal disorders.

- Lubricate with a water-soluble gel. **DO NOT** use petroleum jelly.
- Gently insert the thermometric sensor **no more than 2cm** into the rectum. **DO NOT** force the product into the rectum. Stop insertion and abort the measurement when pain is present.

Note: The rectal method is the most accurate method for identifying the basal temperature and it is advised to extend the measuring time by 3 minutes after the beep.

Bath Mode

- The product will display **Lo** and °F or °C will flash sequentially throughout the testing process.
- The thermometric sensor is ready to be placed into the bath water.



Maintenance

Cleaning

- Always clean/disinfect the product before and after use to avoid cross contamination.
- Only clean with disinfectant (70% medical alcohol) using a damp cloth.
- Rinse only the thermometric tip under slow running cold water and then dry with a clean soft cloth.
- DO NOT** use harsh chemical cleaning agents.
- DO NOT** immerse the product under water; rinse with hot water over 50°C; soak in alcohol for a long period of time; or use ultrasonic washing to clean the product as this can damage the electronics.

Storage

- Wipe away any dirt and dust from the product.
- Store the product in its protective cover while not in use.
- DO NOT** store the product in the protective cover when it is damp. Wipe it off with a clean dry soft cloth first.
- Store in a safe cool dry place, away from children as per Safety Warnings.
- DO NOT** place any heavy objects on the product.

Troubleshooting

Error Code	Problem	Solution
Lo	Temperature taken is lower than 32.0°C(89.6°F)	Turn off, wait one minute and take a new temperature.
H	Temperature taken is higher than 42.9°C(109.2°F)	Turn off, wait one minute and take a new temperature.
Er1	The thermometer is moved when measuring.	Do not move, and then repeat measurement.
Er2	The time of measurement is excess 15 seconds.	The ambient temperature may be too low, please measure at a higher temperature. The person being measured has may have had a cold drink. Wait 15 minutes and Repeat Measurement. The probe tip may not have cooled down from the previous measurement. Wait 30 seconds between each measurement. The thermometer is moved when measuring, do not move, and then repeat measurement.
	Dead battery: battery icon is flashing/not completing a measurement.	Dispose of the unit as per instructions.

If the problem is not solved by the troubleshooting guide or you have any queries, please contact our service centre:

In Australia - 1800 807 464 In New Zealand - 0800 523 583

DO NOT attempt to open or repair the product yourself.

Note: The product is initially calibrated at the time of manufacture. If this product is used according to the instructions, re-calibration should not be required. However, if you feel that the product is out of specification, please contact us.

Technical Data

Product Name	Welcare Digital Thermometer
Model No.	WDT606 (Ultimate)
Power Type/Rating	Lithium Manganese Button Battery (CR2032 3V DC)
Battery Life	Approx. 200 hours of continuous operation or 3 years with 1 measurements per day.
Thermometer Type	Digital Thermometer (Predictive)
Measurement Range	32.0 - 42.9°C / 89.6 - 109.2°F
Measurement Scale Increments	0.1°C / 0.1°F
Measurement Accuracy	±0.1°C (±0.2°F) during 35.5°C~42.0°C (95.9°F~107.6°F) at 18°C~28°C (64.4°F~82.4°F) ambient operating range ±0.2°C (±0.4°F) for other measuring and ambient operating range
Operating Conditions	Temperature: 5 - 40°C Humidity: 15% - 95% RH (non-condensing) Atmospheric pressure: 700hPa to 1060hPa
Storage/Transport Conditions	Temperature: -20 - 55°C Humidity: 15% - 95% RH (non-condensing) Atmospheric pressure: 700hPa to 1060hPa
Dimensions	13.4cm×3.1cm×1.6cm(L×W×H) (out of packaging)
Weight	Approx. 23g including battery
IP Rating	IP27 The first digit indicates the level of protection that the enclosure provides against access to any hazardous parts and the ingress of solid foreign particles. 2 = protection against particles >12.5mm The second digit indicates the level of protection that the enclosure provides against the harmful ingress of water. 7 = Protected from immersion between 15 cm and 1 m in depth.

Applied Part	Type BF Equipment – Degree of protection against electric shock
Materials	ABS + TPE plastic, Stainless Steel, Silica Gel, LCD Screen, Nickel Plated Iron Safety Screw
Contents	Welcare Digital Thermometer, Storage Case, Battery (permanently installed in product), Instruction Manual and Warranty Card



Manufactured by:

JOYTECH HEALTHCARE CO., LTD
No.365, Wuzhou Road, Yuhang Economic Development Zone, 311100, Hangzhou, China.

Distributed by: (New Zealand)
J A DAVEY PTY LTD C/- Healthcare Logistics
626 Lorimer Street 58 Richard Pearce Drive
Port Melbourne, VIC 3207 Mangere, Auckland 2022

Your Welcare Digital Thermometer comes with a 1 Year Limited Warranty. See the enclosed Warranty Card for further information.

Register your warranty online at www.jadavey.com.au

For warranty repairs call:

In Australia - 1800 807 464 In New Zealand - 0800 523 583

This device complies with the provisions of the EC directive 93/42/EEC (Medical Device Directive) and the European Standard EN124703:2000+A1:2009, Clinical thermometers - Part 3: Performance of compact electrical thermometers (nonpredictive and predictive) with maximum device.

Important information regarding Electro Magnetic Compatibility (EMC)

Welcare Digital Thermometer manufactured by Joytech Healthcare Co., Ltd conforms to EN60601-1-2:2015 Electro Magnetic Compatibility (EMC) standard.

Further documentation in accordance with this EMC standard is available at www.jadavey.com.au

Disposal



At the end of its life, please treat this product as electronic waste and dispose of responsibly according to the current local regulations.

V07/21